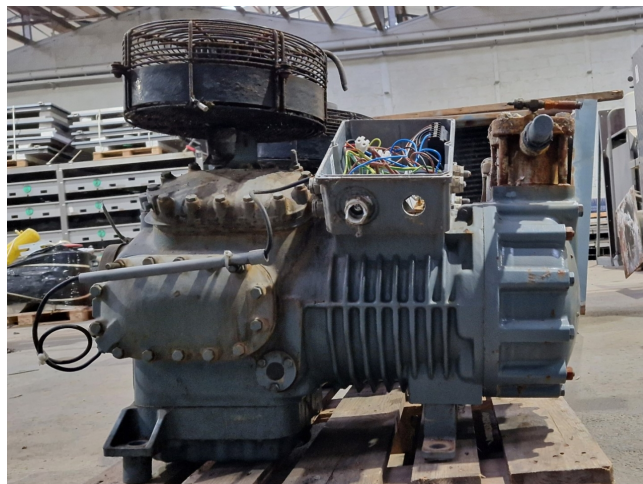


# DWM D8DT1-450X-BWM/D

## Specifications

Brand	DWM
Type	D8DT1-450X-BWM/D
Refrigerant	Freon
kW at -5°C/+40°C	120,2
kW at -10°C/+40°C	98,5
kW at -20°C/+40°C	64,0
kW at -30°C/+40°C	39,1
kW at -40°C/+40°C	21,3
kW at -45°C/+40°C	14,2
Sight Glass	✓
m3 / h	180,1m³/h at 50 Hz
Remarks	Y.o.b. 2005
Sizes	850x600x730 mm (LxWxH)
Stock	1



## Description

### Used DWM D8DT1-450X-BWM/D

Used DWM / Copeland D8DT1-450X-BWM/D semi-hermetic reciprocating compressor on Freon. Complete with a fan and a sight glass. The compressor has a displacement of 180,1 m³/h at 50 Hz.

\*Why choose for HOSBV? We are not only the largest used refrigeration specialist in Europe, but also, we deliver all equipment including an extensive test, warranty and industrial cleaning. \*If requested we are happy to arrange your logistics.

